

Key stage 1

Phonics Screening Practice

Set 4

blurst



zoo

chom



cloud

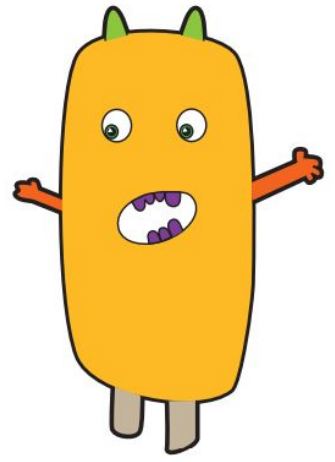
Guidance

This document will help your child practise for the statutory phonics screening test.

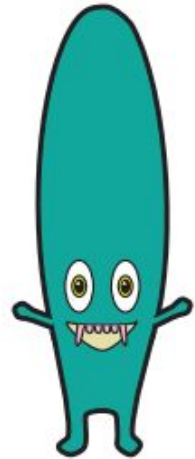
It contains a mixture of real words and pseudo-words (nonsense words), just like the real test they will take in school.

All pseudo-words are accompanied by a picture of an imaginary creature. This provides context for the child (naming the type of imaginary creature) to ensure that they are not trying to match the pseudo-word to a word in their vocabulary.

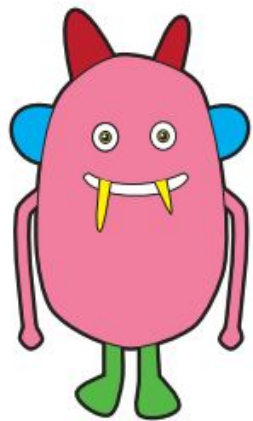
niff



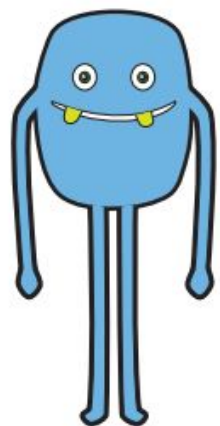
dass



pell



quazz



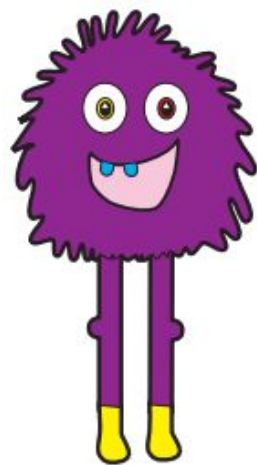
slow

heat

glue

foot

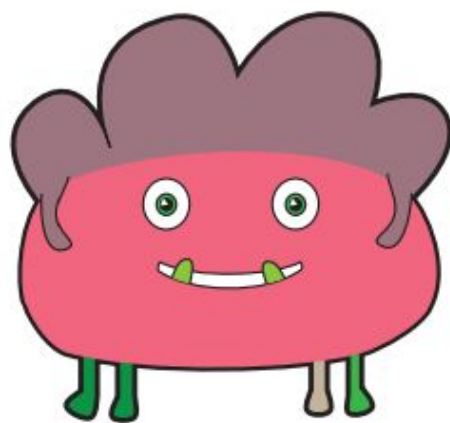
gick



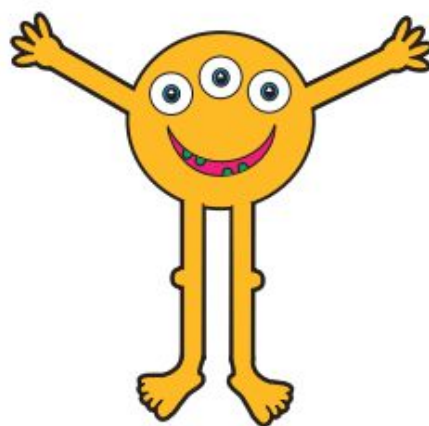
jenk



baip



weef



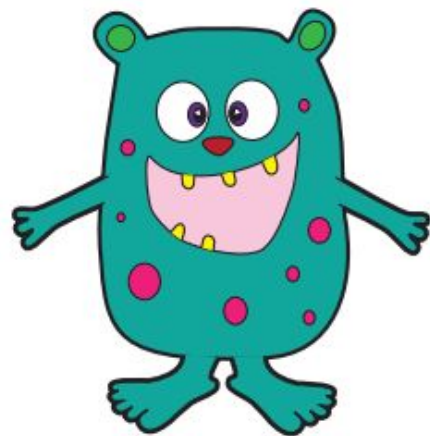
give

sore

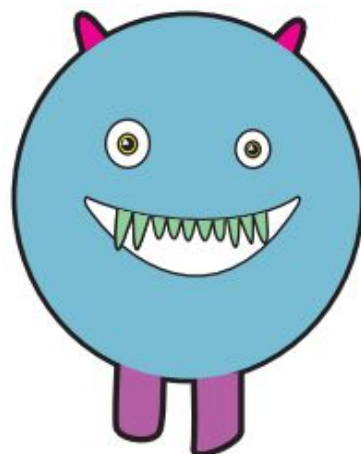
few

toes

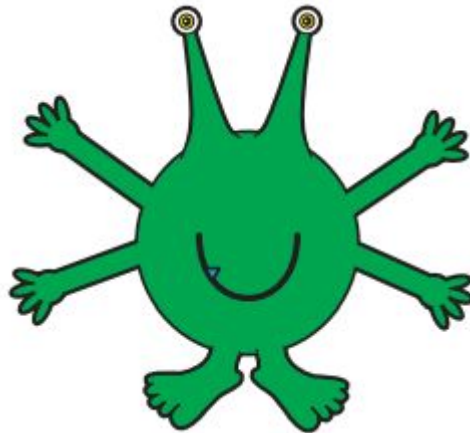
figh



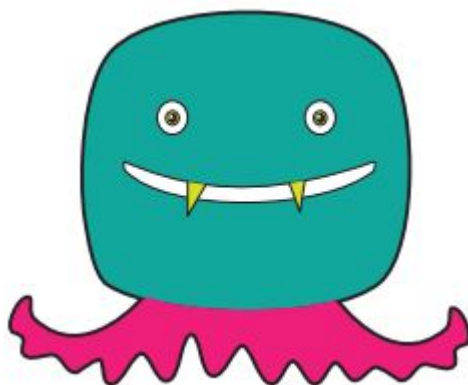
soam



moot



kay



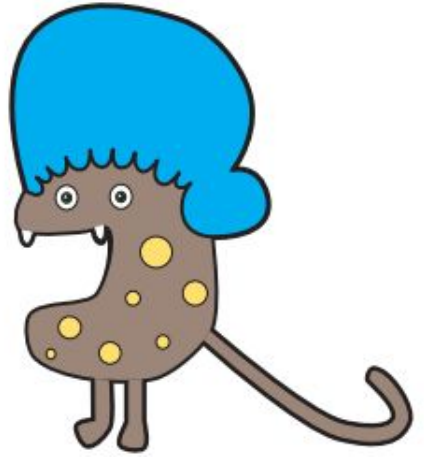
crown

ditch

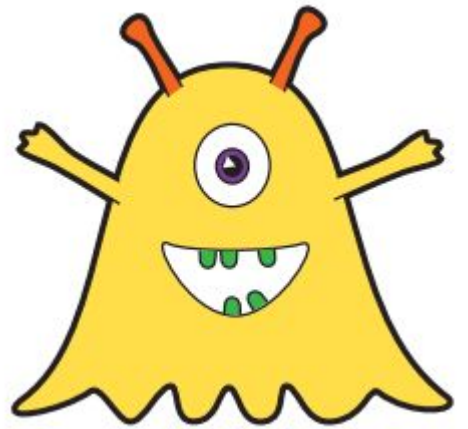
head

tied

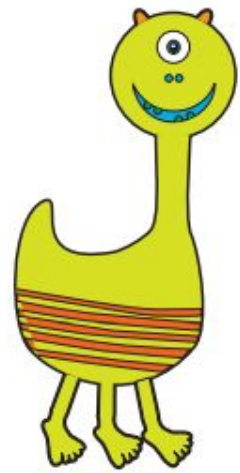
shabe



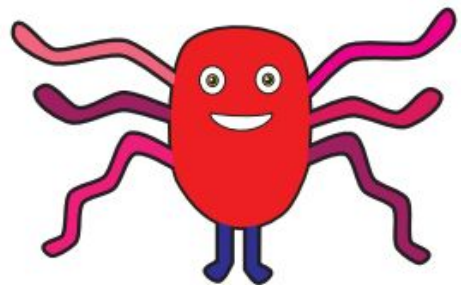
nairs



cribe



norst



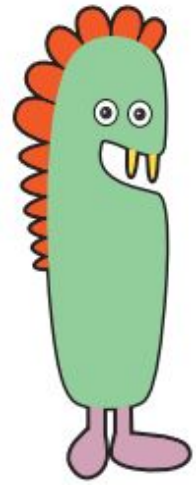
paw

twenty

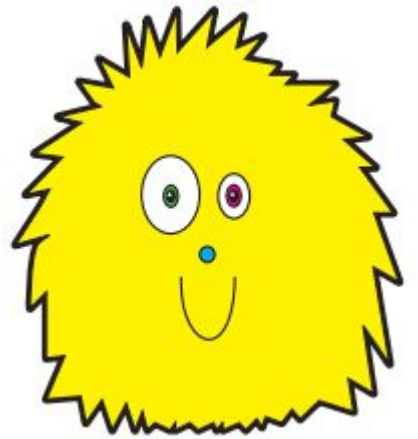
loudest

belief

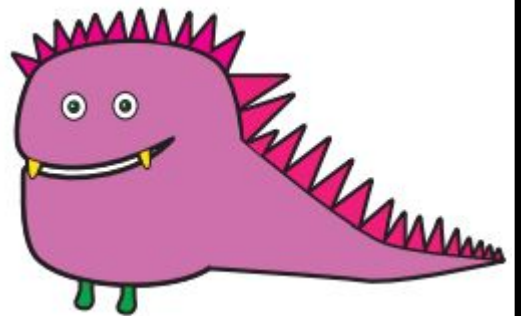
ploys



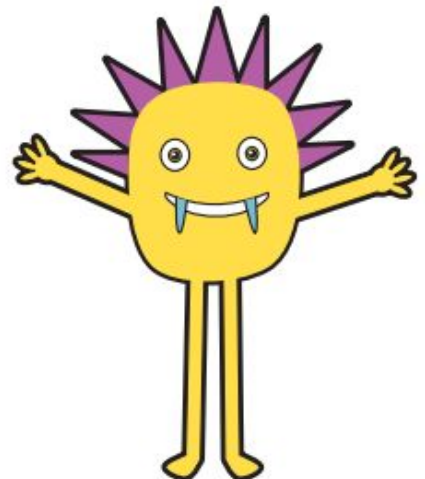
sloke



gutck



blard



appear

include

better

person



Mr P's Resources