

# Key stage 1

# Phonics Screening Practice

Set 8

blurst



zoo

chom



cloud

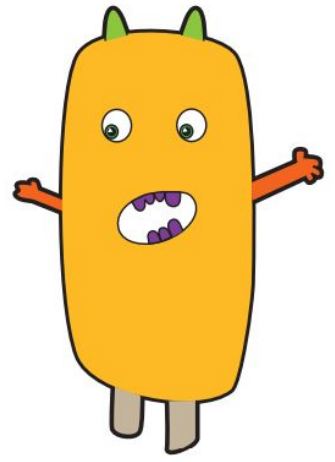
# Guidance

This document will help your child prepare for the statutory phonics screening test.

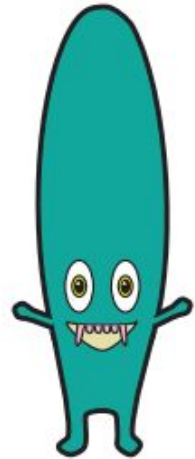
It contains a mixture of real words and pseudo-words (nonsense words), just like the real test they will take in school.

All pseudo-words are accompanied by a picture of an imaginary creature. This provides context for the child (naming the imaginary creature) to ensure that they are not trying to match the pseudo-word to a word in their vocabulary.

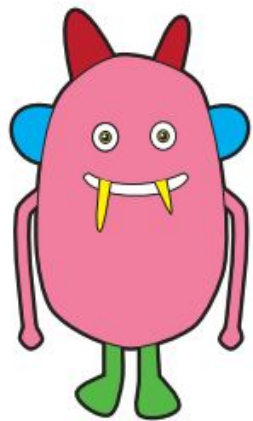
laub



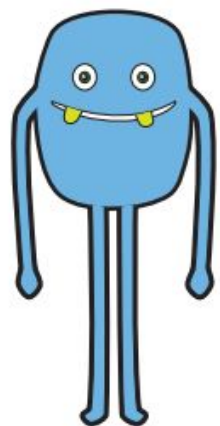
uffey



vame



flebe



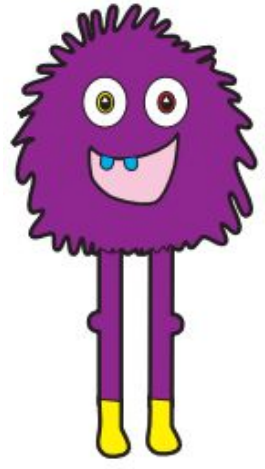
*high*

*map*

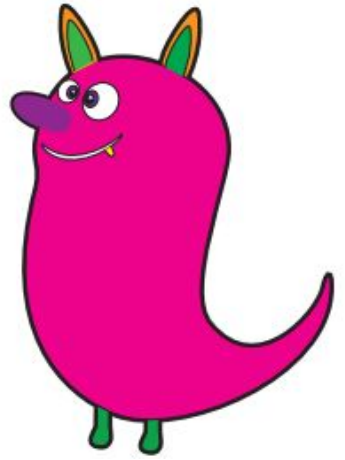
*kick*

*beard*

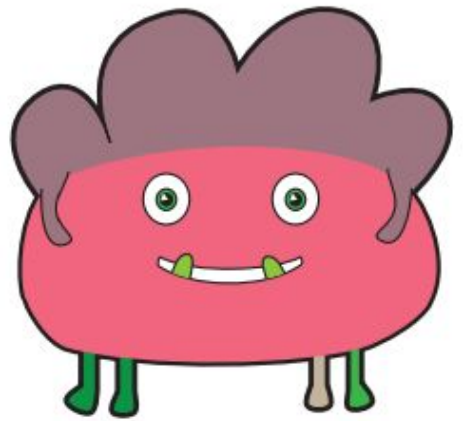
chife



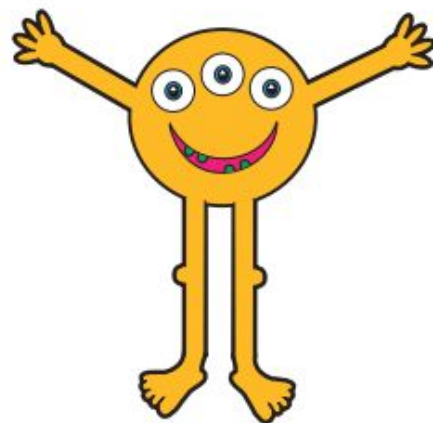
shauz



shobe



poot



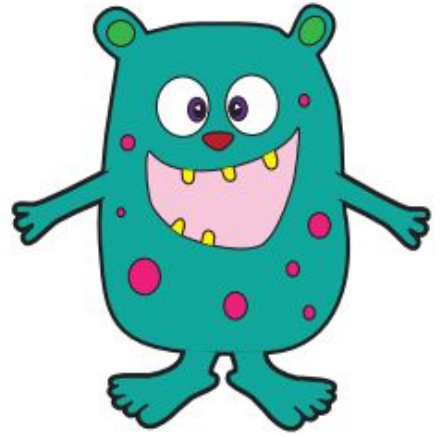
cramp

shampoo

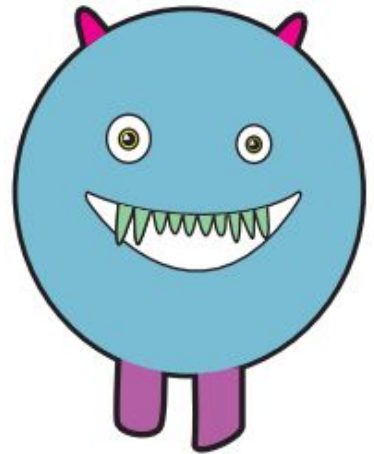
crust

block

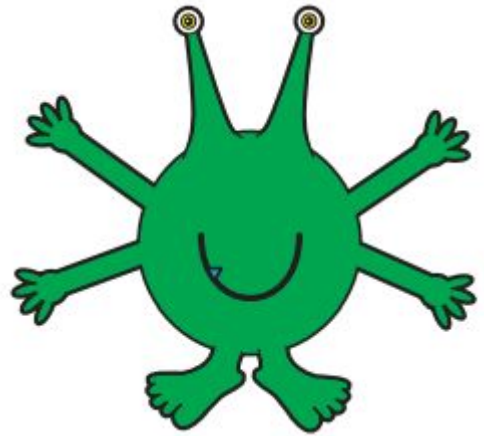
flez



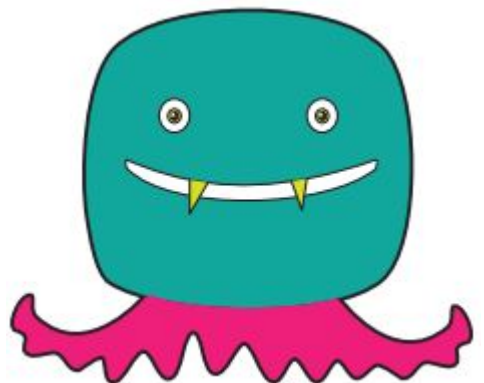
drac



plit



rerg



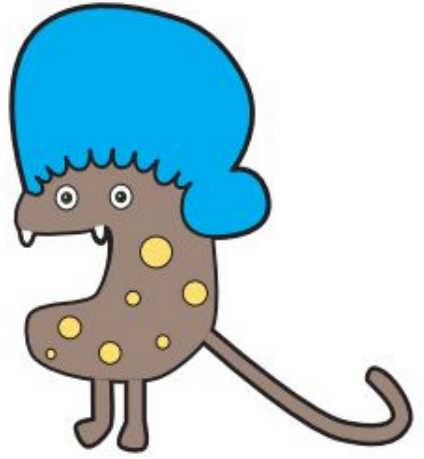
smart

frog

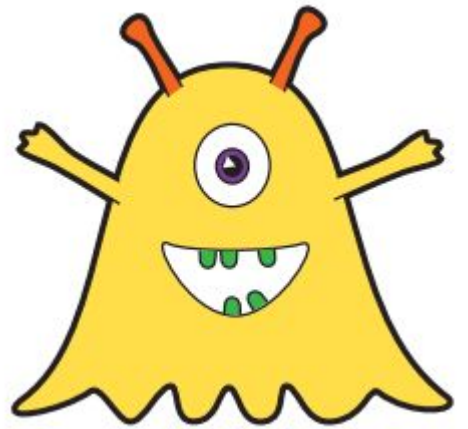
yawn

phone

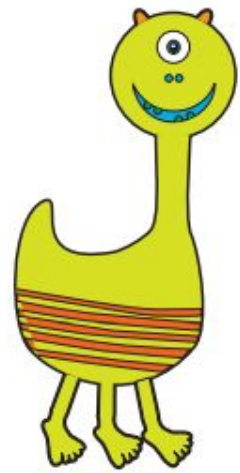
vair



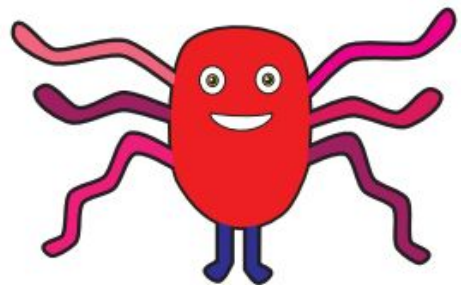
cag



droo



jode



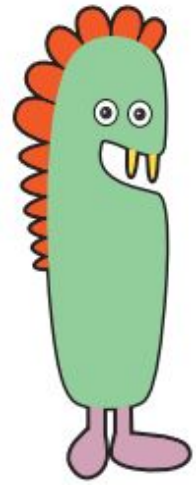
*new*

*heroes*

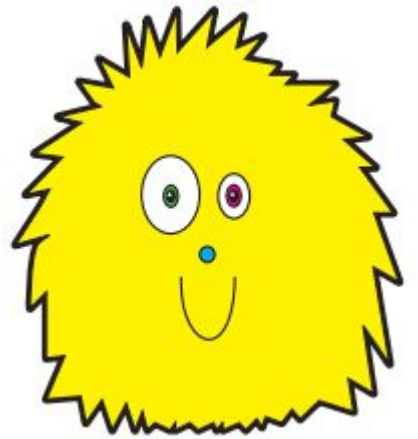
*honey*

*haul*

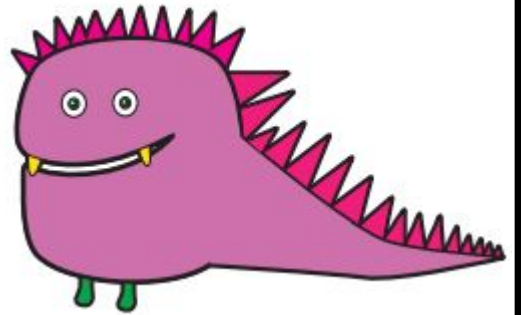
zay



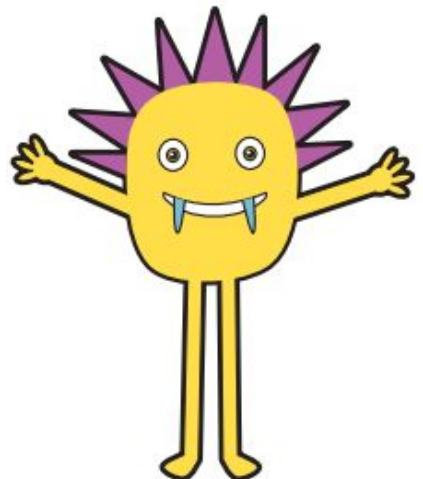
moud



sone



paught



*bark*

*circus*

*bunch*

*match*



*Mr P's Resources*